

MELLON COLLEGE OF SCIENCE (MCS)

MCS undergraduates are breaking the boundaries of science.

PROGRAMS

Biological Sciences

Biological Sciences (BA or BS)
Biological Sciences and Psychology (BS)
Biological Sciences/Neuroscience Track (BS)
Neuroscience (BS)

Chemistry

Chemistry (BA or BS)
Chemistry/Biological Chemistry Track (BS)

Mathematical Sciences

Computational Finance (BS)
Mathematical Sciences (BS)
Mathematical Sciences (Computational and Applied Mathematics) (BS)
Mathematical Sciences (Discrete Mathematics and Logic) (BS)
Mathematical Sciences (Operations Research and Statistics) (BS)
Mathematical Sciences (Statistics) (BS)
Mathematical Sciences and Economics (BS)

Physics

Physics (BA or BS)
Physics/Applied Physics Track (BS)
Physics/Astrophysics Track (BS)
Physics/Biological Physics Track (BS)
Physics/Chemical Physics Track (BS)
Physics/Computational Physics Track (BS)

Intercollege

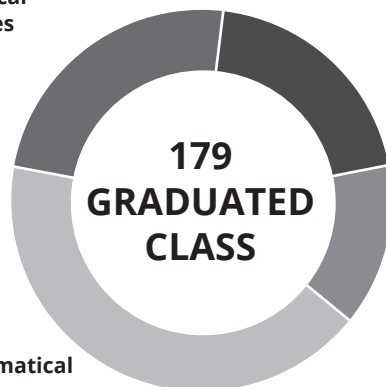
Bachelor of Science and Arts (BSA)
Science and Humanities Scholars Program (SHS, joint with DC)

INTERDISCIPLINARY PROGRAMS

The **Health Professions Program** guides students interested in medicine, dentistry or other health professions in their course choices and as they apply for professional degree programs.

GRADUATED CLASS – SPRING 2018

Biological Sciences
24%



Physics
20%

Chemistry
14%

Mathematical Sciences
42%

**179
GRADUATED
CLASS**

Popular Freshman Courses

- > Molecular Tools for Biologists and Chemists
- > Putnam Seminar
- > MCS Freshman Seminar: EUREKA
- > Phage Genomics Research
- > Matter & Interactions

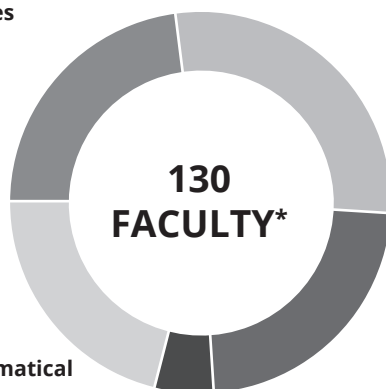
More than 70% of undergraduates conduct cutting-edge research. Create new knowledge. Advance their fields. Publish results.

MCS Admitted Student Averages

SAT-ERW*	SAT-M*	ACTE	ACTM	ACTC
720-770	780-800	34	34	34
Rank 5%	GPA 3.92	*Middle 50% range		

FACULTY

Biological Sciences
22%



Physics
27%

Chemistry
22%

Mathematical Sciences
26%

Interdisciplinary
3%

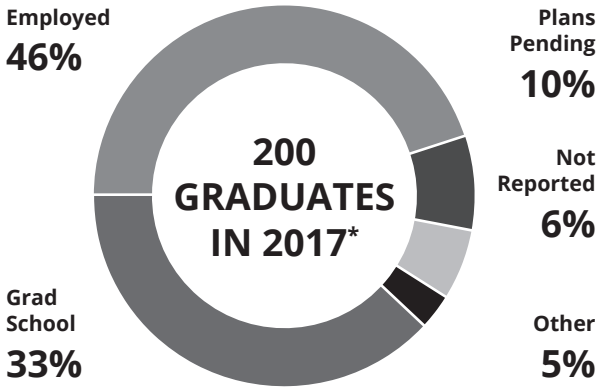
**130
FACULTY***

Notable Faculty

- > **Alison Barth**, professor of biological sciences, is a recipient of the Society for Neuroscience's Research Award for Innovation in Neuroscience. Barth is an **inventor of technologies that are advancing the field of brain research.**
- > **Po-Shen Loh**, assistant professor of mathematical sciences, is the **academic director of the United States Mathematical Olympiad program and national lead coach of the U.S. team.** He's also founder of the crowd-sourced science and math education website ExpII.com.

*Pittsburgh undergraduate research and teaching track faculty

GRADUATE SUCCESS



*Percentages recorded as of January 2018

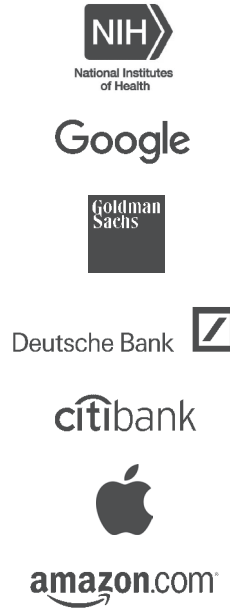
Alumni Accomplishments

Mathematical sciences 2018 graduate **Joshua Brakensiek**, who was a **Goldwater Scholar** and **Putnam Fellow** during his undergraduate studies, received an **NSF Graduate Research Fellowship** to continue his studies in math and computer science at Stanford.

Christina Cabana, a 2018 chemistry graduate and Science and Humanities Scholar, will pursue a master's degree of philosophy in chemistry at the University of Cambridge under a **Gates Cambridge Scholarship**. Cabana received a **Goldwater Scholarship** when she was an undergraduate at MCS.

Biological sciences 1990 graduate **Glen de Vries** founded a company, **Medidata, that's helping the health care and drug industries do better science**. Medidata brings data analytics and artificial intelligence into play and is now keeping track of more than 8 billion clinical records for more than 2 million patients, with 1,400 more patients being entered into its system daily.

Top Employers



Student Startups

- > **Emerald Cloud Lab**, founded by biological sciences 2005 grad **D.J. Kleinbaum** and computational biology 2005 grad **Brian Frezza** is revolutionizing the biotechnology industry by using robotics to make laboratory experiments more efficient and precise.

RESEARCH



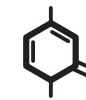
Astrophysics and Cosmology

The universe holds many secrets, including what makes up dark matter and dark energy. Researchers at the McWilliams Center of Cosmology are leaders in astrophysical research, playing important roles in projects including the Large Synoptic Survey Telescope project and the Sloan Digital Sky Survey.



Climate Science

The air is full of tiny particles that form both naturally and from human actions. Researchers at Carnegie Mellon are at the forefront of identifying how these particles evolve as they travel through the atmosphere and the impact they have on cloud formation, rainfall, climate and human health.

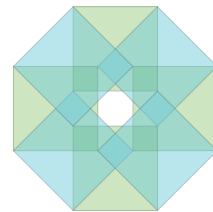


Nucleic Acids Science

The Center for Nucleic Acids Science and Technology pairs biology and chemistry to study nucleic acids. The center is a leader in the development of synthetic nucleic acids and has created new technologies, including gene editing techniques, that are being developed for the treatment of disease.

CORE EDUCATION

1. MCS's revolutionary **Core Education** program educates students as scholars, professionals, people and citizens and creates well-rounded young scientists uniquely prepared to enter the workforce or pursue further education.
2. The **EUREKA! Discovery and Its Impacts** seminar equips first-year students with foundational knowledge, skills and perspectives that support their development as emerging scientists.
3. The **PROPEL** seminar prepares juniors for their impending transitions into professional life with lectures on science and society, entrepreneurship and innovation, and professional development.
4. The **ENGAGE** requirements help students to become well-rounded individuals by engaging in the arts, wellness and service throughout their time at Carnegie Mellon.



PREPARING STUDENTS TO BE 21ST-CENTURY SCIENTISTS:

- **Scholars:** deeply trained in their disciplines
- **Professionals:** adept at communicating and accustomed to working in multidisciplinary teams
- **Persons:** with a sense of wellness and balance
- **Citizens:** actively involved and globally engaged

Carnegie Mellon University

OFFICE OF ADMISSION
CARNegie MELLON UNIVERSITY
5000 FORBES AVENUE
PITTSBURGH PA 15213-3890
T: 412.268.2082
F: 412.268.7838
E: admission@andrew.cmu.edu

- f CarnegieMellonAdmission
- t CM_Admission
- in carnegiemellonadmission
- yt Carnegie Mellon Office of Admission
- vo CMAdmission

cmu.edu/admission

Choose your program
Change the world